



CUSTOMER: _____ **DATE:** _____

CONTACT: _____ **PHONE:** _____ **FAX:** _____

1) APPLICATION

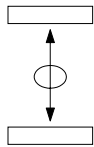
- INDOOR OUTDOOR MARINE ENVIRONMENT MOBILE EQUIPMENT OVERHEAD CRANE/HOISTING CRANE CHAIR
- PORTABLE EQUIPMENT FOOT PEDAL OTHER _____

2) CONTROLLER SIZE & DURABILITY

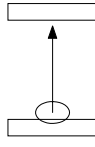
- MINIATURE: V10 H100 H7 V14 V20 S14 MEDIUM: V11 V8 D8
- SMALL: V5 VV5 S2 S21 S22 S23 S24 N6 LARGE: V3 V6 VV6 D64 DD64 K2

3) CONTROLLER FUNCTIONS

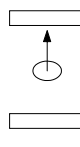
SINGLE AXIS (PICK 1 OF 3 ITEMS BELOW)



STANDARD BI-DIRECTIONAL

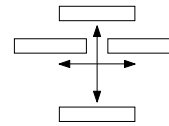


FULL TRAVEL UNI-DIRECTIONAL

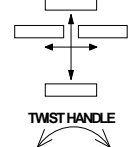


CENTER TO END UNI-DIRECTIONAL

DUAL AXIS



MULTI AXIS



TWIST HANDLE

4) SWITCH SPECIFICATIONS

LEFT HAND MOUNTING

- VOLTAGE _____ AC/DC CURRENT _____ AMPS.
 DIRECTION 1&2 DIRECTION 3&4
 NUMBER OF CONTACTS _____ NUMBER OF CONTACTS _____
 STEPLESS OR STEPS _____ STEPLESS OR STEPS _____
- SPRING RETURN SPRING RETURN
 - FRICTION BRAKE FRICTION BRAKE
 - POTENTIOMETER _____ POTENTIOMETER _____
 - ELECTRONICS ELECTRONICS

RIGHT HAND MOUNTING

- VOLTAGE _____ AC/DC CURRENT _____ AMPS.
 DIRECTION 5&6 DIRECTION 7&8
 NUMBER OF CONTACTS _____ NUMBER OF CONTACTS _____
 STEPLESS OR STEPS _____ STEPLESS OR STEPS _____
- SPRING RETURN SPRING RETURN
 - FRICTION BRAKE FRICTION BRAKE
 - POTENTIOMETER _____ POTENTIOMETER _____
 - ELECTRONICS ELECTRONICS

5) ELECTRONICS

A) VALVE SPECIFICATIONS

VALVE MANUFACTURE _____ MODEL NUMBER _____

SUPPLY VOLTS: _____ VDC COIL RESISTANCE: _____ OHMS THRESHOLD: _____ mA MAX. OUTPUT _____ mA

SINGLE COIL DUAL COIL FLOW CONTROL SWITCHES FOR DIRECTIONAL VALVES PWM FREQUENCY: _____ Hz

B) SIGNAL OUTPUTS

SUPPLY VOLTS: _____ VDC 4-20mA 0-20mA 0-10V -10V to +10V OTHER _____

C) OPTIONS FOR BOTH

SINGLE MAX. (A ADJ.) DUAL MAX. (A & B ADJ.) DUAL RANGE _____ mA RAMP TIME _____ SEC.

6) HANDLE TYPE

- STANDARD KNOB MECHANICAL INTERLOCK PUSHBUTTON DEADMAN PUSH DEADMAN PULL DEADMAN
- PALM HANDLE _____

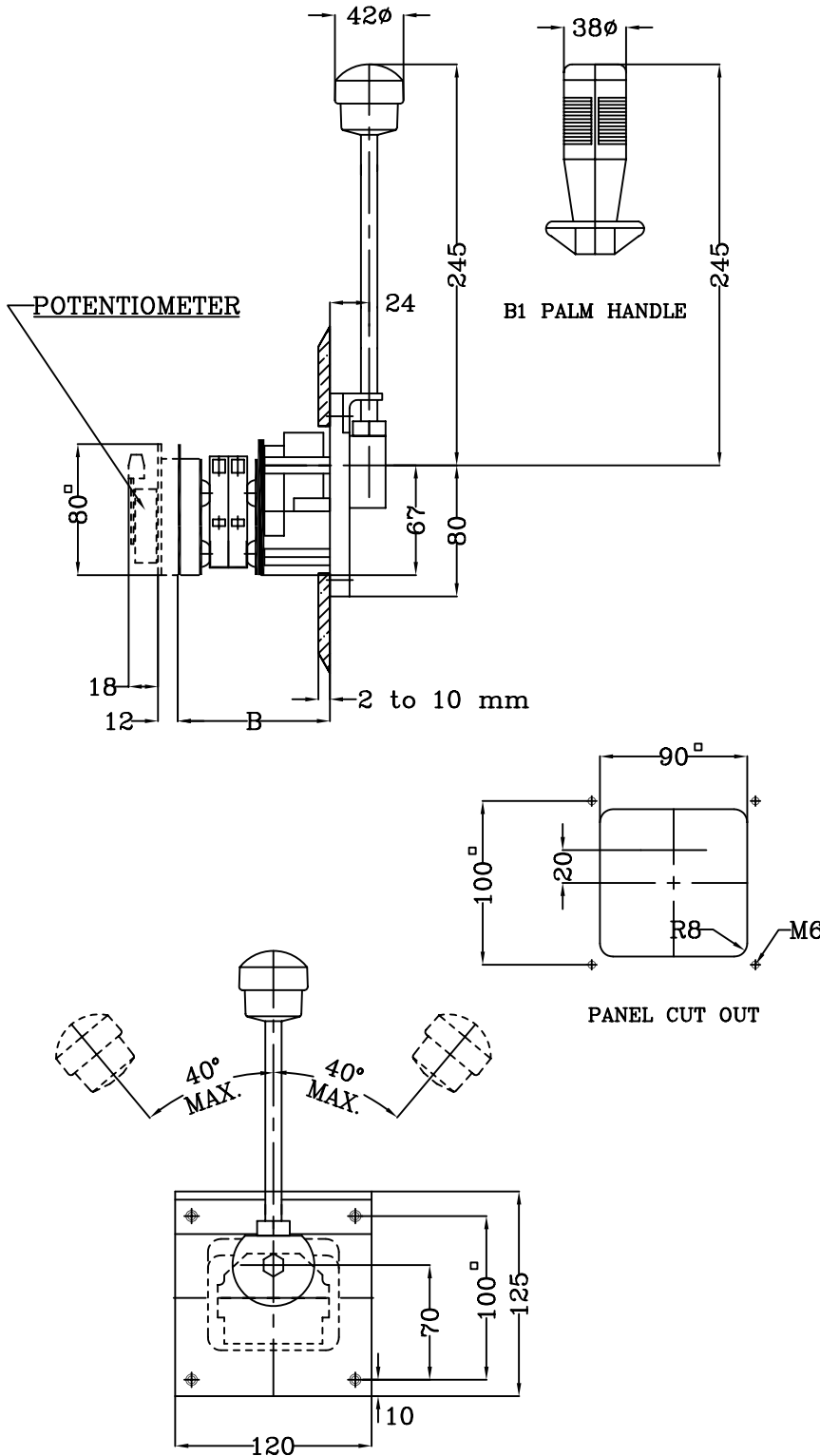
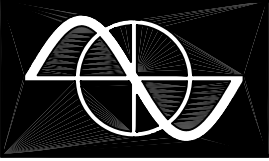
7) NAMEPLATE SPECIFICATIONS

STANDARD NAMEPLATE _____ SPECIAL NAMEPLATE (ATTACH LAYOUT DRAWING OR SPECIFICATIONS)

8) ENCLOSURE

- GENERAL PURPOSE WEATHERPROOF CORROSIVE RESISTANT (PLASTIC) PORTABLE CONSOLES
- ENCLOSURE DIMENSIONS L= _____ W= _____ H= _____ TS1 TS2

9) NOTES



THE S6 MASTER SWITCH IS RUGGED, COMPACT AND IT'S MODULAR DESIGN IS SUITABLE FOR ALMOST ANY APPLICATION. IT IS BUILT FOR 10 MILLION OPERATIONS. IT IS OIL, OZONE, UV AND SALT ATMOSPHERE (OCEAN CONDITION) RESISTANT. CONTACTS RATED AT 2A 250V AC15 RES. 1A 24V DC13 (GREY STANDARD). 4A 250V AC15 RES. (YELLOW SPECIAL) S800a DC CONTACT (NOT CSA) 25A 24VDC, 25A 80VDC, 18A 110VDC, 1A 220VDC DEGREE OF PROTECTION FRONT: IP54

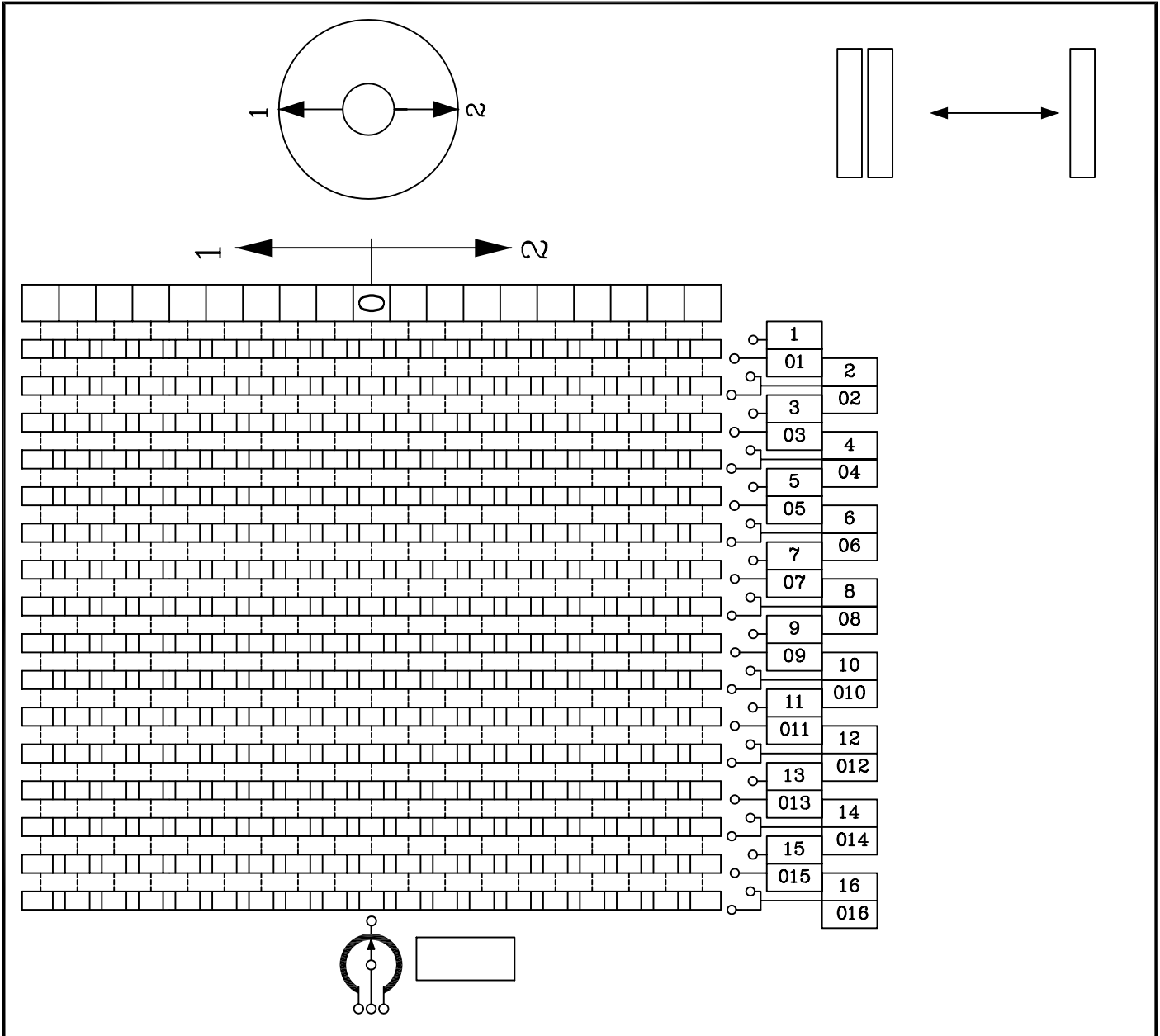
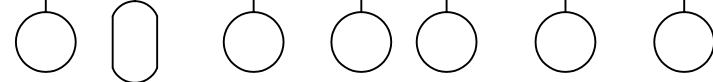
STANDARD CONTACTS

SIZE	# OF CONTACTS	B DIMENSION
01	2	86
02	4	98
03	6	111
04	8	123
05	10	136
06	12	148

S800 DC CONTACTS

SIZE	# OF CONTACTS	B DIMENSION
1	1	125
2	2	134
3	3	154
4	4	164
5	5	183
6	6	194
7	7	212
8	8	224
9	9	241
10	10	254
11	11	270
12	12	284
13	13	298
14	14	312

K2-MASTER SWITCH	○
S6-MASTER SWITCH	○
X-STANDARD HANDLE	○
B-PUSH BUTTON IN HANDLE	○
SPECIAL HANDLE SEE SECT. 5	○
CONTACT ARR. DIR. 1-2	○
A-Z-FROM SHEET 20.2.1	○
O-SPECIAL CONTACT ARR.	○
X-IF NOT REQUIRED	○
Z-SPRING RETURN	○
T-BRAKE ADJUSTABLE	○
P-POTENTIOMETER SEE SECT. 6	○
P-POTENTIOMETER MOUNTING	○
X-IF NOT REQUIRED	○
1-M-STANDARD NAMEPLATE. SECT. 20.1	○
X-IF NOT REQUIRED	○
O-SPECIAL NAMEPLATE MARK IN CHART	○
G-GENERAL PURPOSE ENCL.	○
W-WEATHERPROOF ENCL.	○
O-OPEN TYPE SWITCH	○



GESSMANN		JOB #
K2 & S6 MASTER SWITCH		
DATE:	FROM:	
NAME:		