



**CUSTOMER:** \_\_\_\_\_ **DATE:** \_\_\_\_\_

**CONTACT:** \_\_\_\_\_ **PHONE:** \_\_\_\_\_ **FAX:** \_\_\_\_\_

### 1) APPLICATION

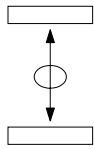
- INDOOR    OUTDOOR    MARINE ENVIRONMENT    MOBILE EQUIPMENT    OVERHEAD CRANE/HOISTING    CRANE CHAIR
- PORTABLE EQUIPMENT    FOOT PEDAL    OTHER \_\_\_\_\_

### 2) CONTROLLER SIZE & DURABILITY

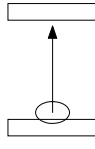
- MINIATURE: V10 H100 H7 V14 V20 S14    MEDIUM: V11 V8 D8
- SMALL: V5 VV5 S2 S21 S22 S23 S24 N6    LARGE: V3 V6 VV6 D64 DD64 K2

### 3) CONTROLLER FUNCTIONS

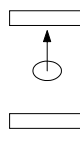
SINGLE AXIS (PICK 1 OF 3 ITEMS BELOW)



STANDARD BI-DIRECTIONAL

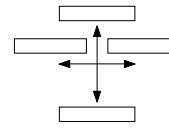


FULL TRAVEL UNI-DIRECTIONAL

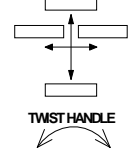


CENTER TO END UNI-DIRECTIONAL

DUAL AXIS



MULTI AXIS



TWIST HANDLE

### 4) SWITCH SPECIFICATIONS

LEFT HAND MOUNTING

RIGHT HAND MOUNTING

- VOLTAGE \_\_\_\_\_ AC/DC    CURRENT \_\_\_\_\_ AMPS.  
 DIRECTION 1&2    DIRECTION 3&4  
 NUMBER OF CONTACTS \_\_\_\_\_    NUMBER OF CONTACTS \_\_\_\_\_  
 STEPLESS OR STEPS \_\_\_\_\_    STEPLESS OR STEPS \_\_\_\_\_
- SPRING RETURN     SPRING RETURN
  - FRICTION BRAKE     FRICTION BRAKE
  - POTENTIOMETER \_\_\_\_\_     POTENTIOMETER \_\_\_\_\_
  - ELECTRONICS     ELECTRONICS

- VOLTAGE \_\_\_\_\_ AC/DC    CURRENT \_\_\_\_\_ AMPS.  
 DIRECTION 5&6    DIRECTION 7&8  
 NUMBER OF CONTACTS \_\_\_\_\_    NUMBER OF CONTACTS \_\_\_\_\_  
 STEPLESS OR STEPS \_\_\_\_\_    STEPLESS OR STEPS \_\_\_\_\_
- SPRING RETURN     SPRING RETURN
  - FRICTION BRAKE     FRICTION BRAKE
  - POTENTIOMETER \_\_\_\_\_     POTENTIOMETER \_\_\_\_\_
  - ELECTRONICS     ELECTRONICS

### 5) ELECTRONICS

#### A) VALVE SPECIFICATIONS

VALVE MANUFACTURE \_\_\_\_\_ MODEL NUMBER \_\_\_\_\_  
 SUPPLY VOLTS: \_\_\_\_\_ VDC    COIL RESISTANCE: \_\_\_\_\_ OHMS    THRESHOLD: \_\_\_\_\_ mA    MAX. OUTPUT \_\_\_\_\_ mA  
 SINGLE COIL    DUAL COIL    FLOW CONTROL    SWITCHES FOR DIRECTIONAL VALVES    PWM FREQUENCY: \_\_\_\_\_ Hz

#### B) SIGNAL OUTPUTS

SUPPLY VOLTS: \_\_\_\_\_ VDC     4-20mA    0-20mA    0-10V    -10V to +10V    OTHER \_\_\_\_\_

#### C) OPTIONS FOR BOTH

SINGLE MAX. (A ADJ.)    DUAL MAX. (A & B ADJ.)    DUAL RANGE \_\_\_\_\_ mA    RAMP TIME \_\_\_\_\_ SEC.

### 6) HANDLE TYPE

- STANDARD KNOB    MECHANICAL INTERLOCK    PUSHBUTTON DEADMAN    PUSH DEADMAN    PULL DEADMAN
- PALM HANDLE \_\_\_\_\_

### 7) NAMEPLATE SPECIFICATIONS

- STANDARD NAMEPLATE \_\_\_\_\_     SPECIAL NAMEPLATE (ATTACH LAYOUT DRAWING OR SPECIFICATIONS)

### 8) ENCLOSURE

- GENERAL PURPOSE     WEATHERPROOF     CORROSIVE RESISTANT (PLASTIC)     PORTABLE CONSOLES
- ENCLOSURE DIMENSIONS L= \_\_\_\_\_ W= \_\_\_\_\_ H= \_\_\_\_\_     TS1     TS2

### 9) NOTES

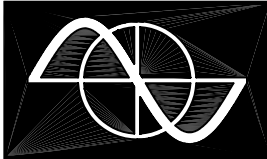
---



---



---

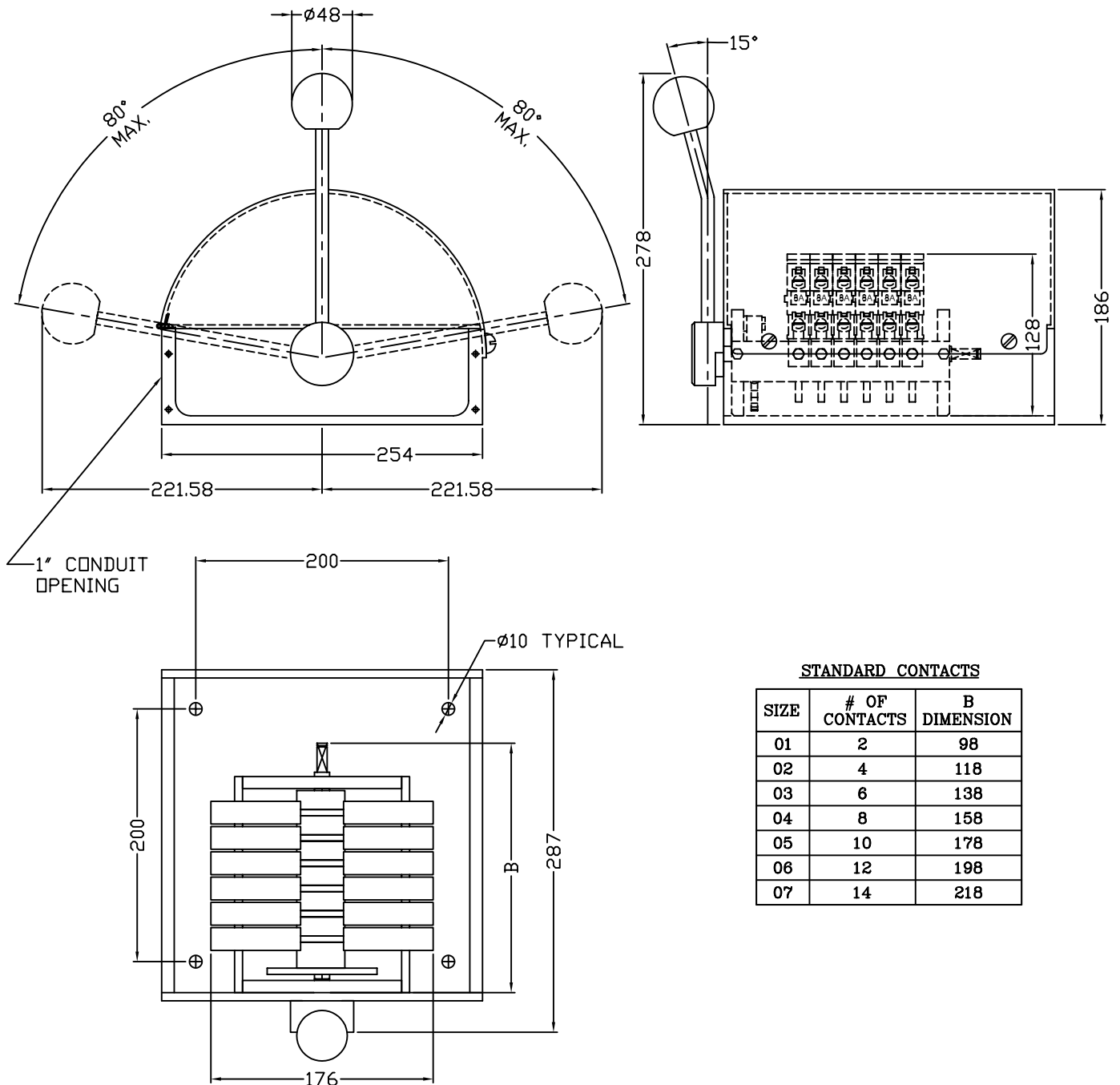


**SENETT  
CONTROL  
CO. LTD.**

# HDS SINGLE AXIS MASTER SWITCH

**VER.3  
3.9.1**

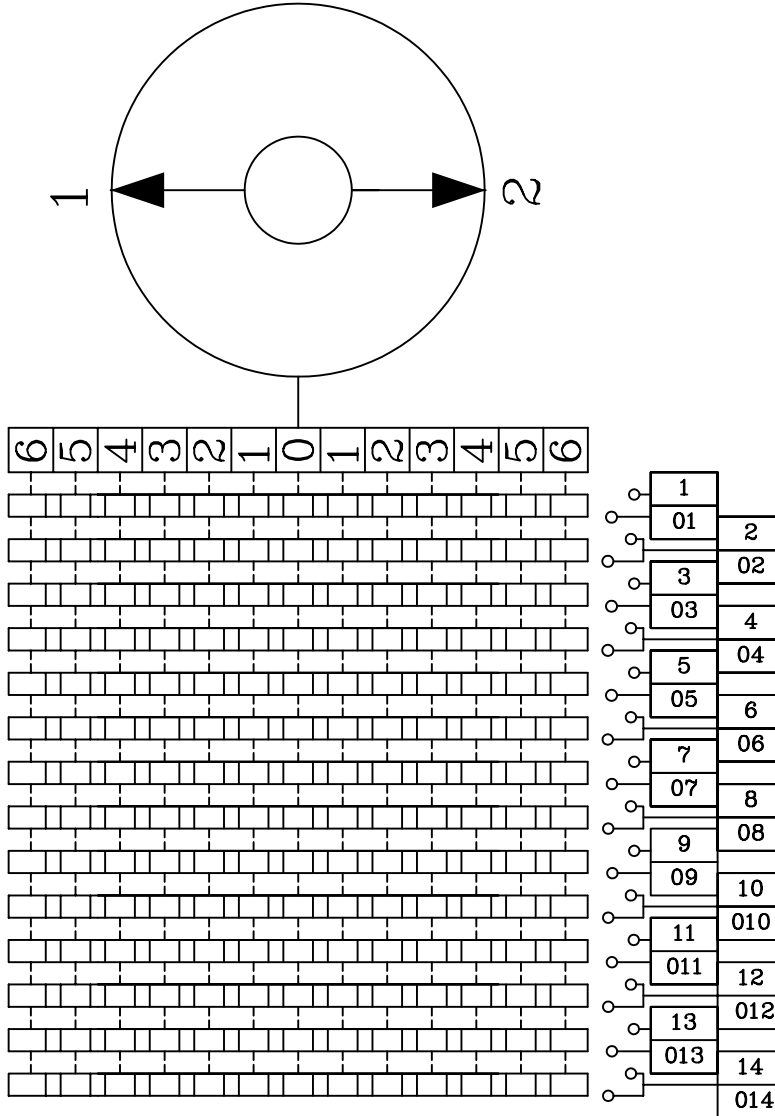
THE HDS MILL DUTY MASTER SWITCH IS DESIGNED TO OPERATE HIGH CURRENT DC CONTROLS. IT IS DESIGNED FOR 10 MILLION OPERATIONS. IT IS INCORPORATING DC CONTACTS WITH SPARK BLOW OUT COILS CAPABLE OF SWITCHING 8 AMPS AT 600 VOLTS DC. IT IS AVAILABLE UP TO 14 CONTACTS, 6-0-6 SPEEDS, WITH SPRING RETURN OR FRICTION BRAKE.



**225 ADMIRAL BLVD. MISSISSAUGA, ONTARIO. L5T 2T3**




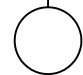
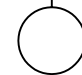
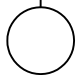
**TEL: (905) 564-0167  
FAX: (905) 564-6633**

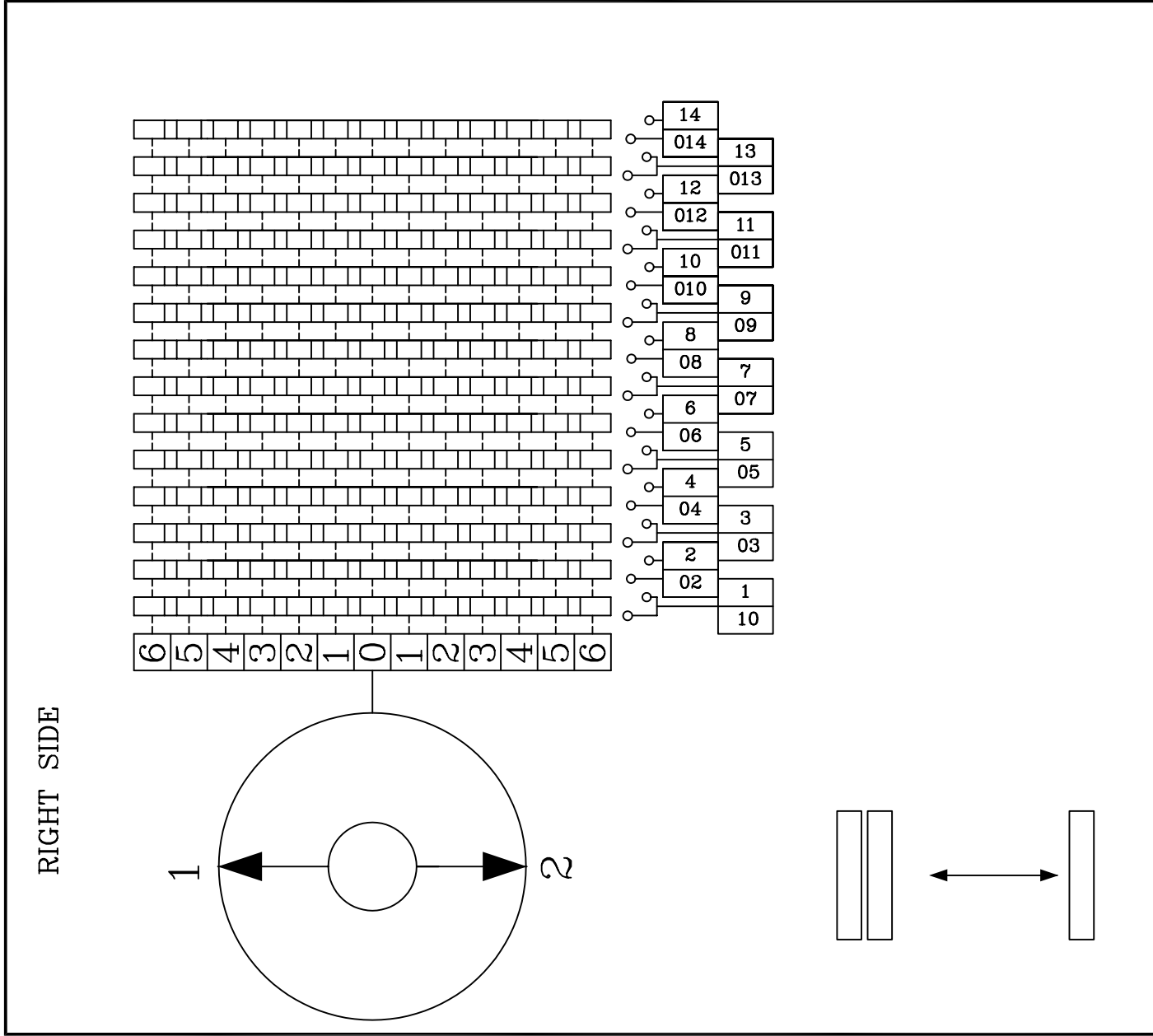
LEFT SIDE



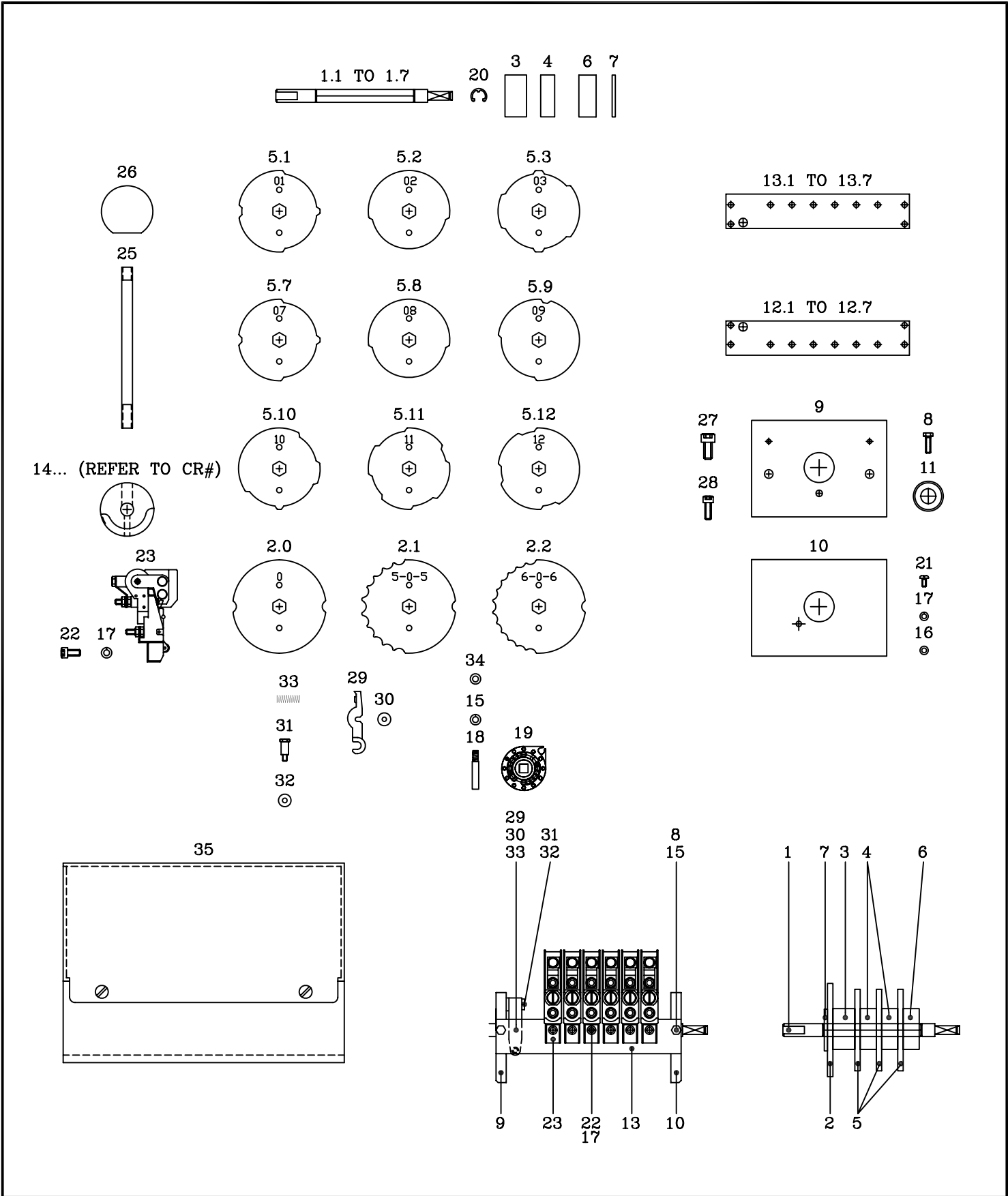
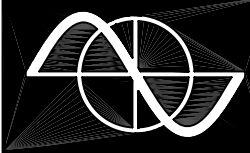
- HDS-MASTER SWITCH
- X-STANDARD HANDLE
- M-MECH. INTERLOCK IN 0 POSS.
- CONTACT ARR. DIR. 1-2
- A-S-FROM SHEET 20.2.1
- O-SPECIAL CONTACT ARR.
- z-SPRING RETURN
- r-BRAKE ADJUSTABLE
- X-IF NOT REQUIRED
- 1-M-STANDARD NAMEPLATE. SECT. 20.1
- X-IF NOT REQUIRED
- O-SPECIAL NAMEPLATE MARK IN CHART
- G-GENERAL PURPOSE ENCL.
- W-WEATHERPROOF ENCL.

|   |              |              |
|---|--------------|--------------|
| <p style="text-align: center;"><b>GESSMANN</b><br/><b>HDS MASTER SWITCH</b></p> |              | <p>JOB #</p> |
| <p>DATE:</p>  | <p>FROM:</p> |              |
| <p>NAME:</p>  |              |              |

|   |   |
|---|---|
|    | HDS-MASTER SWITCH   |
|    | X-STANDARD HANDLE<br>M-MECH. INTERLOCK IN 0 POSS.   |
|    | CONTACT ARR. DIR. 1-2<br>A-S-FROM SHEET 20.2.1<br>O-SPECIAL CONTACT ARR.                        |
|    | z-SPRING RETURN<br>r-BRAKE ADJUSTABLE<br>X-IF NOT REQUIRED                                      |
|    | 1-M-STANDARD NAMEPLATE. SECT.<br>X-IF NOT REQUIRED 20.1<br>O-SPECIAL NAMEPLATE<br>MARK IN CHART |
|  | G-GENERAL PURPOSE ENCL.<br>W-WEATHERPROOF ENCL.   |



|   |              |                       |
|---|--------------|-----------------------|
| <p style="text-align: center;"><b>GESSMANN</b><br/><b>HDS MASTER SWITCH</b></p> |              | <p>JOB #<br/>JOB#</p> |
| <p>DATE:</p>  | <p>FROM:</p> |                       |
| <p>NAME:</p>  |              |                       |





SENETT  
CONTROL  
CO. LTD.

# HDS SINGLE AXIS MASTER SWITCH

VER.3  
3.9.5

| <u>PART#</u> | <u>DESCRIPTION</u>      | <u>PART#</u> | <u>DESCRIPTION</u>            |
|--------------|-------------------------|--------------|-------------------------------|
| 1.1          | CAM SHAFT 01            | 13.3         | RIGHT CONTACT PLATE 03        |
| 1.2          | CAM SHAFT 02            | 13.4         | RIGHT CONTACT PLATE 04        |
| 1.3          | CAM SHAFT 03            | 13.5         | RIGHT CONTACT PLATE 05        |
| 1.4          | CAM SHAFT 04            | 13.6         | RIGHT CONTACT PLATE 06        |
| 1.5          | CAM SHAFT 05            | 13.7         | RIGHT CONTACT PLATE 07        |
| 1.6          | CAM SHAFT 06            | 14....       | JOINT BRACKET                 |
| 1.7          | CAM SHAFT 07            | 15           | SPRING LOCK WASHER M4         |
| 2.0          | 0 STEP RATCHET (SMOOTH) | 16           | FLAT WASHER M5                |
| 2.1          | 5 STEP RATCHET          | 17           | SPRING LOCK WASHER M5         |
| 2.2          | 6 STEP RATCHET          | 18           | RETURN SPRING POSITION BOLT   |
| 3            | SPACER 39x20            | 19           | RETURN SPRING ASSEMBLY NORMAL |
| 4            | SPACER 39x13            | 20           | RETAINING CLIP                |
| 5....        | CUT CAM                 | 21           | PAN HEAD SCREW M5x10          |
| 6            | SPACER 39x16            | 22           | HEX SOCKET CAP SCREW M5x12    |
| 7            | SPACER 39x3             | 23           | DC CONTACT S008               |
| 8            | HEX CAP SCREW M5x16     | 24           |                               |
| 9            | FRONT PLATE             | 25           | SOLID SHAFT                   |
| 10           | BACK PLATE              | 26           | ROUND KNOB                    |
| 11           | BEARING                 | 27           | HEX SOCKET CAP SCREW M8x16    |
| 12.1         | LEFT CONTACT PLATE 01   | 28           | HEX SOCKET CAP SCREW M6x16    |
| 12.2         | LEFT CONTACT PLATE 02   | 29           | RATCHET ARM                   |
| 12.3         | LEFT CONTACT PLATE 03   | 30           | RATCHET ARM ROLLER BEARING    |
| 12.4         | LEFT CONTACT PLATE 04   | 31           | RATCHET ARM STUD              |
| 12.5         | LEFT CONTACT PLATE 05   | 32           | LARGE FLAT WASHER M4          |
| 12.6         | LEFT CONTACT PLATE 06   | 33           | RATCHET ARM SPRING NORMAL     |
| 12.7         | LEFT CONTACT PLATE 07   | 34           | FLAT WASHER M4                |
| 13.1         | RIGHT CONTACT PLATE 01  | 35           | ENCLOSURE                     |
| 13.2         | RIGHT CONTACT PLATE 02  |              |                               |